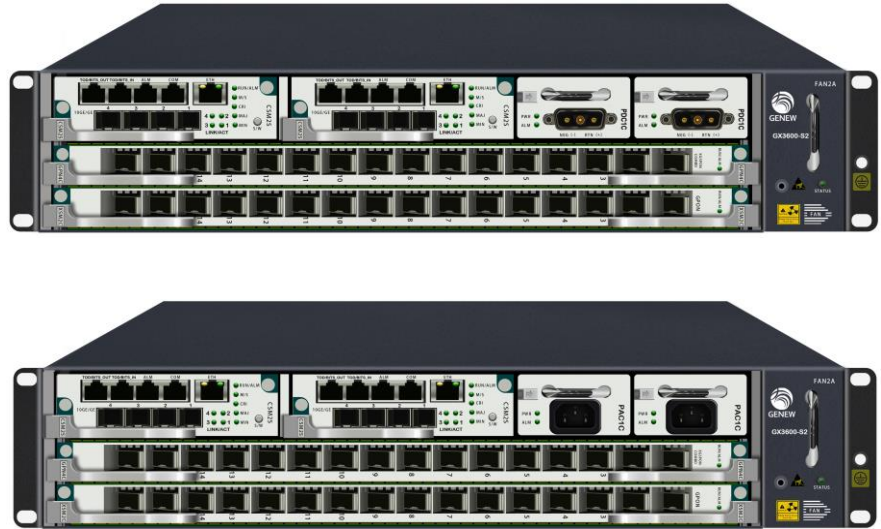




GX3500-S2 Chassis XG(S)PON/GPON OLT

Highlight

- ITU-T G.984/G.987/G.988/G.9807 COMPLIANT 10Gbps/2.5Gbps DOWNSTREAM AND 10Gbps/2.5Gbps/1.25Gbps UPSTREAM PON INTERFACE
- HYBRID PLATFORM FOR GPON/XG(S)PON TECHNOLOGY
- POWER/CSM REDUNDANCE, PON PROTECTION
- 32*GPON/32*XG(S)PON/32* XG(S)PON & GPON Combo PON PORTS IN 2U CHASSIS
- HOT SWAP MODULAR DESIGN
- ADVANCED L2/L3 FUNCTIONS
- ABUNDANT QOS FUNCTIONS
- UNIFIED NMS PLATFORM
- REMOTE PROVISION AND MANAGEMENT



Overview

- GENEW's GX3500-S2 is the chassis GPON platform which support GPON/XG(S)PON and fully compliance with ITU-T G.984/G.987/G.988/G.9807 standards. Coordinate with GENEW's ONT, it completes the end-to-end optical last mile with up to 10Gbps bandwidth for triple play services to residential and business customers.

Key Benefit

Cost-effective Triple Play Transport

GX3500-S2 supports up to 32*GPON/32*XG(S)PON/32*XG(S)PON&GPON Combo PON in 2 service slots from a compact 2U chassis. It provide 4*10GE+4*10GE SFP+ uplink interface on CSM(Control & Switch Module). High subscriber density and low cost of entry, combined with the operational cost savings of GPON technology make GENEW GPON a compelling alternative to legacy, last-mile access solutions.

Enriched Bandwidth Allocate Policy

It supports 5 T-CONT types compliance with ITU-T G.984.3 as well. The enriched QoS features such as traffic policy/traffic shaping/rate limit/Schedule allow operators to provision flexible bandwidth allocate policy for multiple customized service.

Flexible Provisioning, Quick to Revenue

GX3500-S2 supports SNMP/CLI for remote management. Powerful OMCI functions enable remote diagnostics, flexible provisioning, and reconfiguration of the GENEW NMS platform.



GENEW TECHNOLOGIES CO.,LTD.
5-6/F Rich-info Innovation Center,
3176 South KeYuan Road, South Hi-tech park, Nanshan
District,
Shenzhen, CHINA



Tel: +86(755)3698-8868
Fax: +86(755)2661-9963

www.genew.com



A global telecom infrastructure provider of innovative carrier-class Core, Broadband Access and Critical Communications.

© 2020-08 GENEW TECHNOLOGIES, all rights reserved.

Features

PON

- Splitter Ratio: 1:128(GPON), 1:256(XG(S)PON)
- Support B+/C+(GPON), N1/N2(XG(S)PON) transceiver
- SN / SN+Password ONU authentication
- FEC
- ONU Digital Diagnostic Monitor
- Rogue ONU Detection

PTP

- Support IEEE 1588 V2, G.8265.1,G.8275.1,G.8275.2

SyncE

- Support G.8261, G.8262, G.8264

L2

- Line-speed switch/forwarding
- 355K MAC address table
- Port-based VLAN, Protocol-based VLAN, 802.1q VLAN
- ONU-based QinQ, 1:1/N:1 VLAN translate
- LACP/LAG
- STP/RSTP/MSTP
- Port Mirror
- Flow control / Back pressure
- Broadcast/DLF/Unknown Multicast storm control

L3

- Switch Virtual Interface (SVI): IPv4/IPv6
- Static Route
- Static/Dynamic ARP
- ICMP/Traceroute
- DHCP Server / DHCP Relay: IPv4/IPv6

Multicast

- IGMPv1/v2 snooping
- MLDv1 snooping
- IGMP snooping with Proxy
- Fast Leave

QoS (Quality of Service)

- IEEE 802.1p, 8 CoS queue
- SP/WRR/SP+WRR
- IPv4 TOS/IP Precedence
- Classification/Shaping/Policy/Rate limit/Schedule
- DBA
- ONU-based bandwidth control in downstream

Security

- SSH
- ACL
- User isolation
- Encryption in PON downstream
- DHCP Option82 / PPPoE+

OAM

- FTP/TFTP, Ethernet OAM
- SNMP v1 & v2c, Telnet (IPv4/IPv6), Console (CLI)
- In-band/Out-band Management
- Auto provision for ONU configuration
- PM

Specification

Physical

Size:	530mm (W) x 286mm (D) x 88mm (H)
Weight:	10kg
Power:	DC: -48V (Pluggable) Dual DC power redundancy AC: 100~240V(Pluggable) Dual AC power redundancy
Power consumption:	320W (Typical)
Instructure :	2U, Hot Swappable, Modular
Uplink:	4*10GE +4*10GE interface on CSM module
PON:	32*GPON/32*XG(S)PON/ 32*XG(S)PON&GPON Combo PON
PON fiber :	SM, BIDI
PON Interface type:	SC/UPC

Parameters

Switch Capacity:	300Gbps
Flash Size:	64M+8G Bytes (CSM), 64M Bytes (PON)
Memory Size:	4G Bytes (CSM), 4G Bytes (PON)
Split Ratio:	1:64 (GPON), 1:128 (XG(S)PON)
Bandwidth:	GPON: 1.25Gbps (Up), 2.5Gbps (Down) XGPON: 2.5Gbps (Up), 10Gbps (Down) XGSPON: 10Gbps (Up), 10Gbps (Down)
PON Tx Power:	3~7dBm (C+), 4~8dBm (N2a)
PON Rx Sensitivity:	-30 dBm (C+), -29.5dBm (N2a)
PON Rx Overload:	-12 dBm (C+), -9dBm (N2a)
Wavelength:	GPON: 1310 nm (Up), 1490 nm (Down) XG(S)PON: 1270nm (Up), 1577nm (Down)

Compliant

ITU-T G.984/G.987/G.988/G.9807
IEEE 802.1D, Spanning Tree
IEEE 802.1Q, VLAN
IEEE 802.1w, RSTP
IEEE 802.3ad, LACP
Ethernet – II

Environment

Operating Temperature : 0°C~40°C
Storage Temperature : -40°C~70°C
Relative Humidity : 10%~90%, no condensing